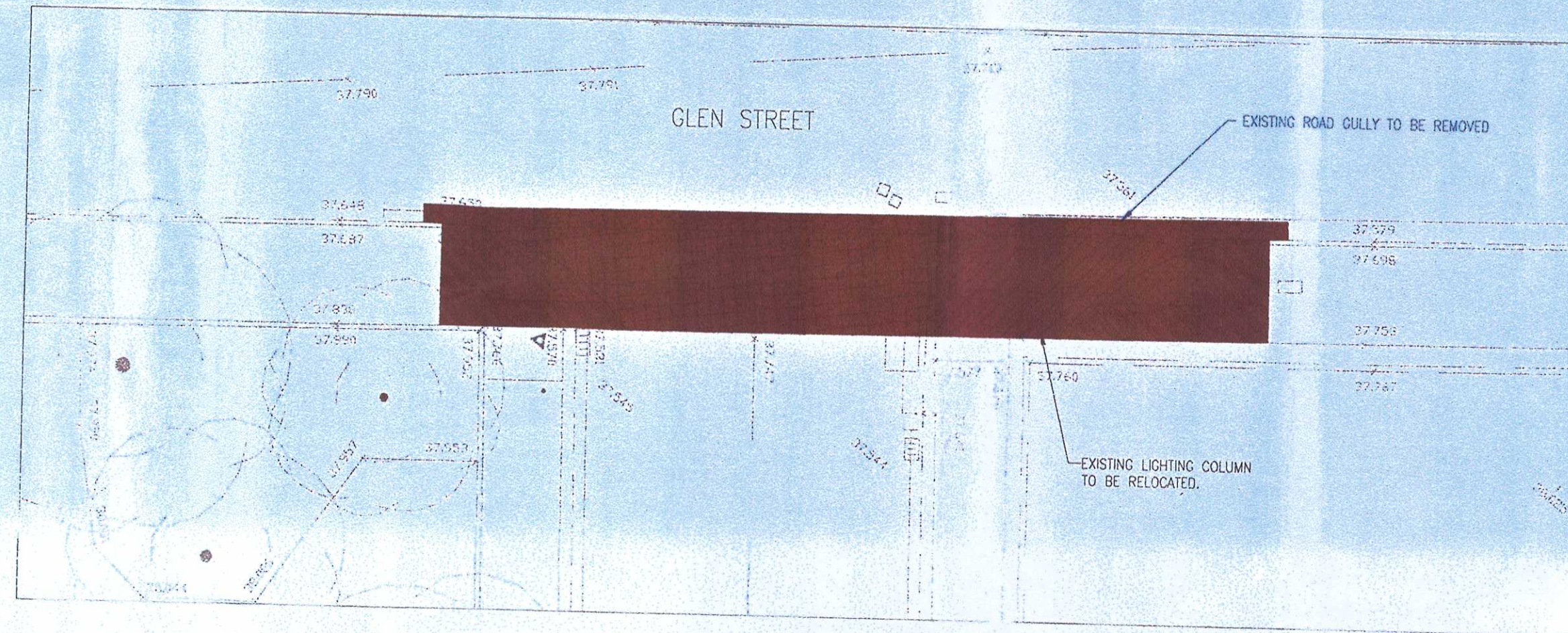
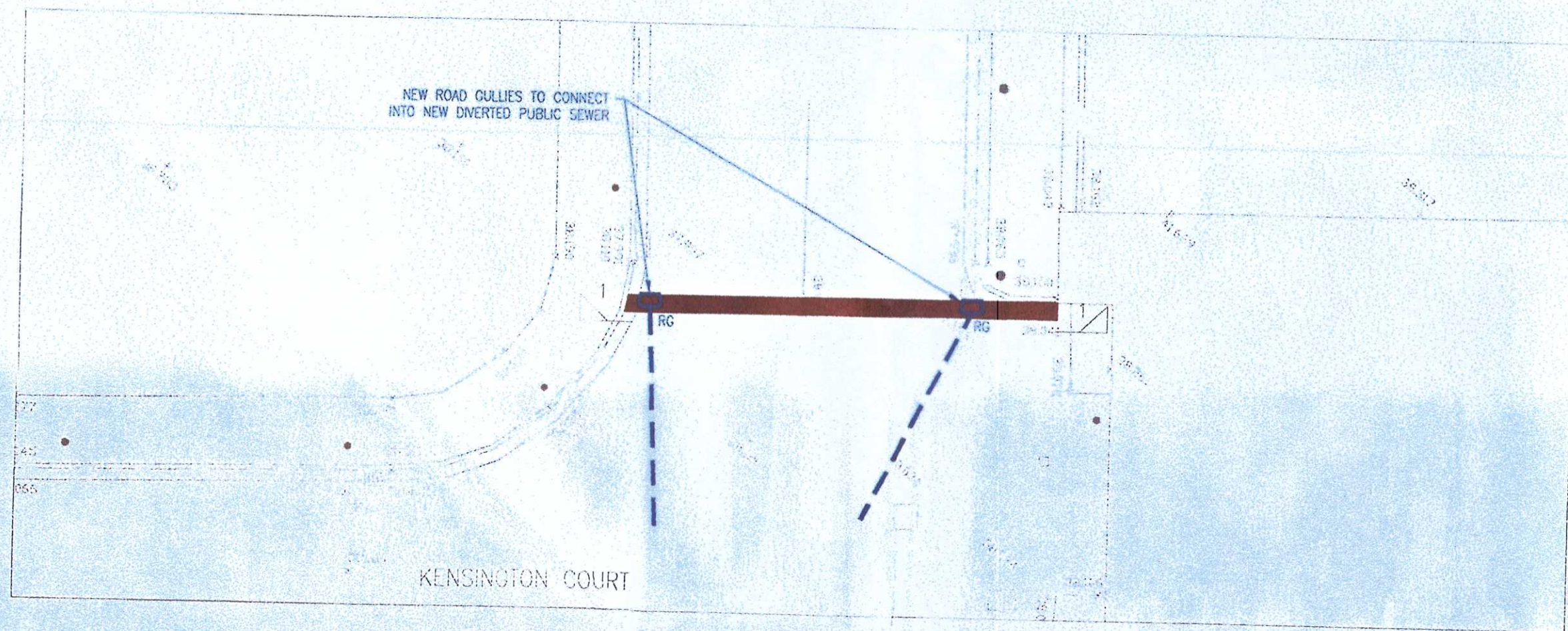


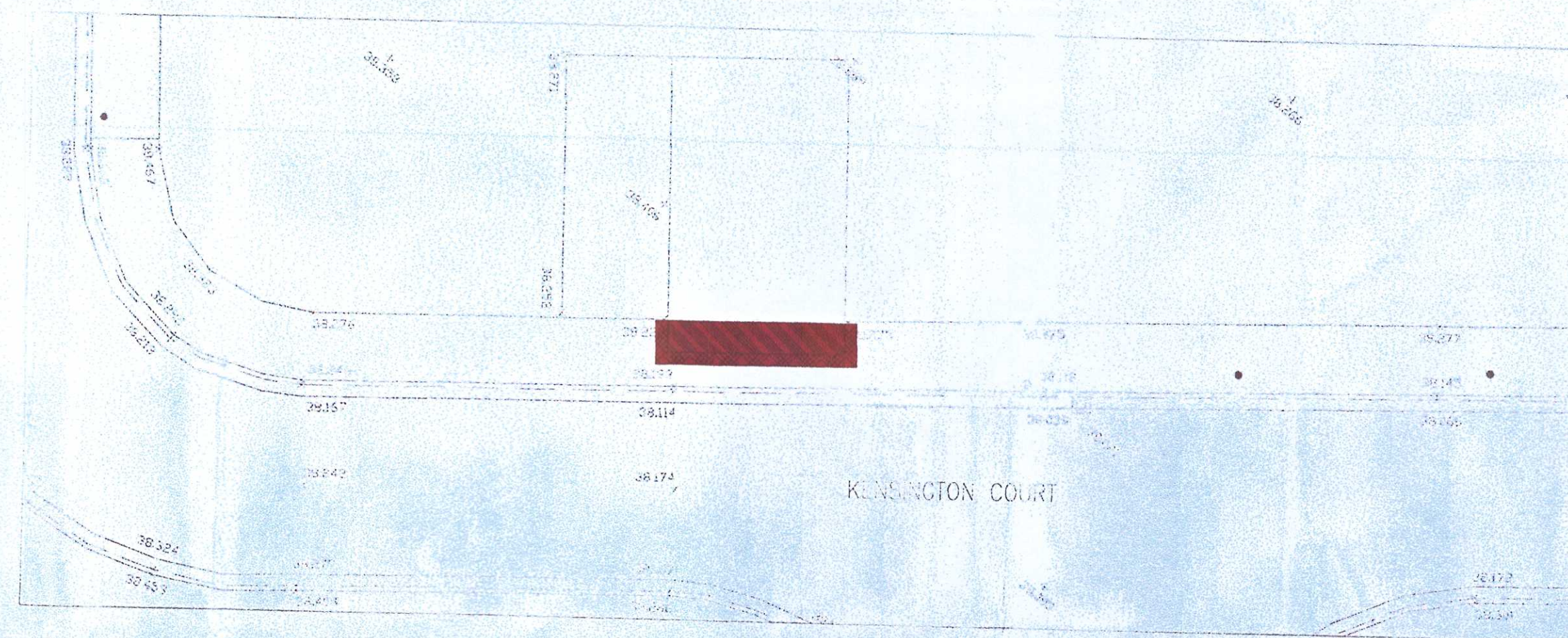
SECTION 38 & 278 PLAN  
SCALE 1:500



INSERT 1  
SCALE 1:100



INSERT 2  
SCALE 1:100



INSERT 3  
SCALE 1:100

- KERBS**
- HB - HALF BATTERED KERB (TO LOCAL AUTHORITY HIGHWAYS SPEC)
  - TR - TRANSITION KERB (B TO DK)
  - DK - DROPPED KERB (6mm FACE)
  - EK - EDGING KERB
  - CB - CHANNEL BLOCK (0mm FACE)

Only PDF/DWF issues of this drawing are controlled. All other formats (eg. DWG, AutoCAD FILES) are UN-controlled and are used at your own risk.

This drawing is copyright ©. It is sent to you in confidence and must not be copied, used or disclosed to any third parties without 3E permission. It remains the property of 3E and must be returned on request.

Contractors should refer to the residual risks contained in the CDM Pre Construction Information before carrying out any site operations and should not issue parts of this drawing without including the CDM notes and references. This information will include details of the SIGNIFICANT risks which 3E have considered beyond that which a competent contractor should be aware.

- HEALTH & SAFETY**
1. CONTRACTOR SHOULD BE AWARE OF GENERAL CONSTRUCTION RISKS TO PREVENT SLIPS, TRIPS AND FALLS AND TAKE NECESSARY PRECAUTIONS WITHOUT SPECIAL INSTRUCTION.
  2. CONTRACTOR TO PROVIDE TRENCH SUPPORTS AS APPROPRIATE AND ENSURE THAT PLANT REMAINS A SAFE DISTANCE FROM TRENCHES PRIOR TO INSTALLING DRAINAGE.
  3. THE TIME THAT EXCAVATIONS ARE OPEN ON SITE SHOULD BE KEPT TO A MINIMUM AND ALL TRENCHES SHOULD BE SURROUNDED BY A BARRIER.
  4. CONNECTIONS TO EXISTING SEWERS TO BE MADE BY SCOTTISH WATER APPROVED CONTRACTOR ONLY.
  5. CONTRACTOR TO MAKE OPERATIVES AWARE OF ASSOCIATED DANGERS TO HEALTH SUCH AS LEPTOSPIROSIS (WELLS DISEASE) AND RECOMMENDED PRECAUTIONS, ADEQUATE WELFARE FACILITIES AND PROTECTIVE CLOTHING TO BE PROVIDED AS REQUIRED.
  6. UNFINISHED MANHOLES MUST BE COVERED WITH LOAD BEARING MATERIALS AND SURROUNDED WITH BARRIER.
  7. SERVICE RECORDS TO BE REFERRED TO PRIOR TO WORK COMMENCING. CONTRACTOR TO PROCEED WITH CAUTION AND SERVICES TO BE LOCATED BY HAND DIC AND PROTECTED ACCORDINGLY.
  8. CONTRACTOR TO ENSURE RELEVANT MEASURES ARE TAKEN TO KEEP PLANT AND PEOPLE A SAFE DISTANCE FROM STEEP SLOPES DURING THE WORKS.
  9. CONTRACTOR TO ENSURE THAT PROCEDURES ARE IN PLACE TO KEEP PEOPLE A SAFE DISTANCE FROM WORKING PLANT WHERE NECESSARY.
  10. CONTRACTOR TO REFER TO GROUND INVESTIGATION REPORT FOR CONTAMINATION TESTS AND TO PROVIDE ADEQUATE WELFARE FACILITIES AND PROTECTIVE CLOTHING AS REQUIRED.

**ADOPTABLE HIGHWAY RELAY (STC)**

- Plane Off 40mm Surf Course
- Apply Lock coat
- Provide 40mm of Hot Rolled Asphalt

**ADOPTABLE HIGHWAY (STC)**

- 40mm HRA 35/14 F Surf 40/60
- 40mm AC 20 dense bin 100/150
- 80mm AC 32 dense base 100/150
- 300mm GSB type 1 Sub-Base

**ADOPTABLE FOOTPATH**

- 25mm AC 6 dense coat 100/150
- 80mm AC 20 dense bin 100/150
- 150mm GSB type 1

**ROAD TIE IN DETAIL**

- 150mm staggered tie in to existing construction.

**EXTENT OF SECTION 278 WORKS**

**EXTENT OF SECTION 38 WORKS**

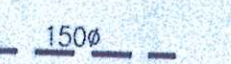
**TACTILE PAVING**

- 400x400x20 tactile concrete paving flags
- to BS EN 1314-2:200
- 15mm mortar bed
- 150mm Cn 3 Concrete
- (Paving surrounded by 50x150 concrete edging kerbs.)

**FOOTPATH TIE IN**

- 100mm staggered tie in to existing construction.

Proposed road gully & connecting pipe work, 150ø pipe unless noted otherwise



Date	Revisions	Drawn	Rev.
08/02/18	Drawing scale updated to 1:500. Inserts added.	OC	13
07/02/18	Submit for its tactile paving & S38 works extent added. EK & CB kerbs added to entrance. Tactile paving shown.	CE	12
20/09/17	Tender issue	AM	11
06/07/17	Initial Issue	GS	P1

**3E Consulting Engineers**

First Floor  
Block C  
Holland Park  
Holland Drive  
Newcastle upon Tyne  
NE2 4LD

T 0191 230 2963  
F 0191 230 3677  
www.3econconsult.com

**Client:** Aldi Stores Ltd [North]

**Project:** Aldi (New Build)  
Station Road, Hebburn

**Title:** Section 278 Agreement

Scale	Drawn	Checked	Date
1:100	GS	MP	May 17

**Drawing Status:** Tender

**Drawing No.:** 136/5-3E-00-XX-DR-C-5000

**Revision:** T3

ALL WORKS TO BE UNDERTAKEN IN ACCORDANCE WITH SOUTH TYNESIDE COUNCIL HIGHWAYS SPECIFICATION

SUBJECT TO THE APPROVAL OF ALL RELEVANT AUTHORITIES



DO NOT SCALE.